



COLLEGE PLANNING GUIDE



**YOU'VE
GOT THIS**

CONTENTS

5

UF Freshman
Profile

6

7th and 8th
Grades

8

9th and 10th
Grades

12

11th Grade

14

12th Grade

15

Application Dates
and Deadlines

16

Holistic Review

17

Applying to UF

18

Undergraduate
Majors

PLANNING FOR UF

A college education can be a gateway to success in today's world. According to the U.S. Department of Education, college graduates with a bachelor's degree typically earn 66 percent more than those with only a high school diploma. This planning guide provides information to make you a stronger applicant for UF or for any college you choose. Our admissions office is also available to answer any questions you may have.

admissions.ufl.edu/contact

A photograph of a brick building at the University of Florida. In the foreground, a large, dark brown archway spans across the frame, with the words "University of Florida" inscribed in gold, serif lettering. The archway is supported by brick pillars. Behind the archway, a multi-story brick building with several windows is visible. The sky is blue with some light clouds, and a green tree is on the right side of the image.

University of Florida



2021 FRESHMAN PROFILE

(MIDDLE 50 PERCENT)

- GPA 4.4-4.6**
- ACT 30-34**
- SAT 1330-1470**

These ranges reflect the middle 50 percent of students admitted to the University of Florida in 2021. It is important to understand that these are NOT minimum criteria, nor does falling within these ranges guarantee that a student will be admitted. UF considers all aspects of a student's application, background and qualifications when making admissions decisions.

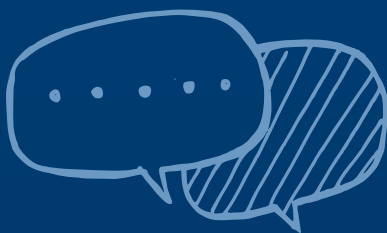


7TH AND 8TH GRADE



You may think that grades seven and eight are too soon to begin thinking about college. However, colleges look at all four years of courses, grades and activities that begin in the ninth grade. By beginning sooner rather than later, you can set yourself up for success for the next four years of high school.

In middle school, you may be offered the opportunity to take some high-school level courses (for example, Algebra 1, physical science, or a foreign language). These courses will count for high school graduation and for college admission consideration.



What are your interests and skills?

This is a time to begin thinking about what type of extracurricular activities you might wish to pursue in high school. How you spend your time outside the classroom is an important consideration in UF's admissions process.

What are your favorite subjects?

Start thinking now about matching your academic talents with a possible college major and eventual career discipline.


Involve your family and others.

Parents, guardians, siblings and school counselors all can help you and offer advice on staying on the right path.





MAKING STRIDES IN HIGH SCHOOL



9TH AND
10TH
GRADES



1

Arrange your class schedule to complete the following college preparatory classes in high school. These courses are the basic requirements for entry into the University of Florida.

> English (with substantial writing)	4 UNITS
> Math (Algebra I, Algebra II, Formal Geometry, and additional math beyond Algebra II)	4 UNITS
> Natural Science (2 of the 3 units must include a laboratory)	3 UNITS
> Social Science	3 UNITS
> Foreign Language (two sequential years in the same language)	2 UNITS

TOTAL	16 UNITS
--------------	-----------------

**The university recommends that you complete at least four additional academic units of electives. The more academic units you complete, the more competitive your application.*

When you apply, UF will recalculate your GPA and give a 1.0 credit weight for AP, IB, AICE and dual-enrollment classes. We will give a .5 credit weight for pre-AICE, pre-AP, pre-IB and honors classes. Classes in the core areas of science, math, English, history and foreign language will be included in the recalculation. Elective classes will be included only if they have an AP, IB or AICE designation.



Students taking dual-enrollment courses must present a minimum 2.0 GPA at every institution attended.

A record of good conduct. Major or continuing difficulty with school or other officials may render an applicant ineligible regardless of academic qualifications.

MAKING STRIDES IN HIGH SCHOOL

2

Meet often with your high school counselor.



3



Take the PSAT or Pre-ACT tests if offered. These are great ways to prepare for the SAT and ACT, respectively.

4

Take challenging classes if available.

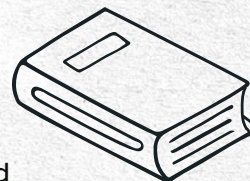
This indicates you are a serious student and willing to work hard. If offered, sign up for Honors and AP, Pre-IB and IB, Pre-AICE and AICE, or Dual Enrollment.



5

Develop strong study habits right away.

All four years of high school are considered when colleges review your application. Academic performance in high school is the most important factor for admissions consideration at most colleges.



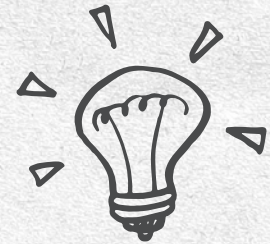
6

Attend a college fair

Gather information and talk to representatives from several schools. Find out when college fairs will be offered at your high school.

7

Consistently involve yourself in extracurriculars. Seek out leadership roles in organizations.



8

It's never too soon to begin your college research.

Look at what majors are available at different colleges and decide if those majors meet your potential career aspirations. Check out our list of available majors at UF on page 18.

9

If you are a Florida resident, ask your high school counselor about the Florida Bright Futures and Benacquisto scholarships.



LEARNING X LIVING 11TH GRADE



The eleventh grade is often the most challenging academically. Take Honors, AP, IB, AICE or academic dual-enrollment classes if they are offered.



If you did not take the PSAT 10 or Pre-ACT in the 10th grade, register early in your junior year. You must take the PSAT (11th grade only) to be considered for the National Merit Scholarship.

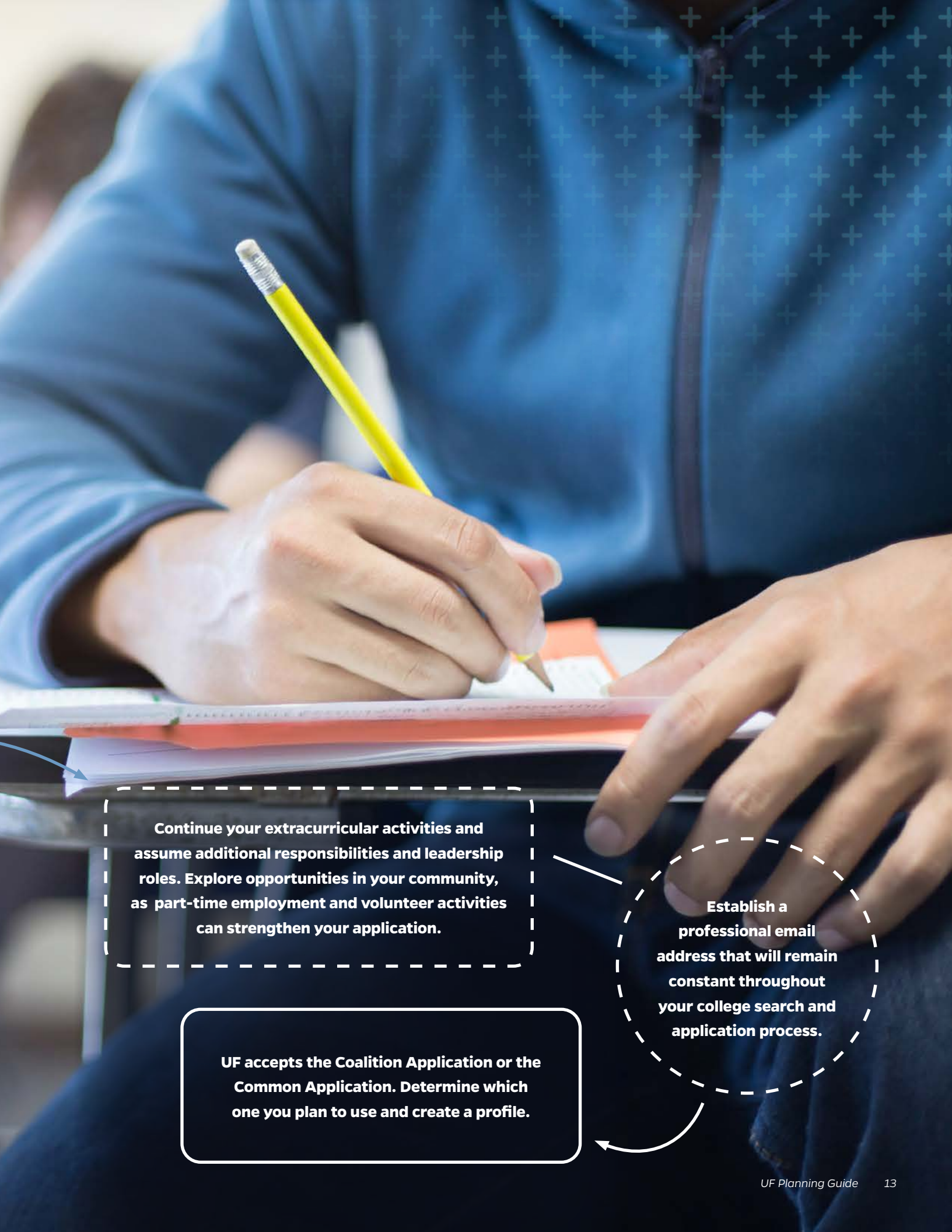
REGISTER FOR THE SAT OR ACT

These are very different types of assessments, so you may wish to consider taking both tests before your senior year begins. The College Board has partnered with Khan Academy to offer free test prep services for the SAT. These free services, accessible through any computer with internet access, will provide personalized practice pathways to help you pinpoint areas where you need to improve, full-length practice tests, and practice materials available to print.

SAT: collegereadiness.collegeboard.org/sat

ACT: act.org

Khan Academy: khanacademy.org



Continue your extracurricular activities and assume additional responsibilities and leadership roles. Explore opportunities in your community, as part-time employment and volunteer activities can strengthen your application.

Establish a professional email address that will remain constant throughout your college search and application process.

UF accepts the Coalition Application or the Common Application. Determine which one you plan to use and create a profile.



12TH GRADE

Arrange to take the SAT and/or ACT again early in 12th grade.

UF will superscore, taking your highest subsection scores across test dates, so don't be afraid to take the test multiple times. We will only review your highest score.

Take a full load of academic classes, including Honors, AP, IB, AICE or academic dual-enrollment classes.

Make plans to attend a college fair or a UF admissions presentation.

If you are taking AP, IB and/or AICE classes, be sure to take the exams for those classes at the end of the year.

IMPORTANT DATES + DEADLINES

When applying to UF, these are the most important dates to remember:

MID AUGUST >

The Coalition and Common Applications open for UF admission. Choose which application you prefer. UF has no preference and accepts each equally.

OCTOBER 1 >

The Free Application for Federal Student Aid (FAFSA) opens at <https://studentaid.gov/fafsa>. To receive the best financial aid offer, complete the FAFSA as early as possible.

NOVEMBER 1 >

Priority deadline for the UF freshman application

DECEMBER 1 >

Student Self-Reported Academic Record (SSAR) deadline

DECEMBER 15 >

Test score submission deadline

FEBRUARY 25 >

UF releases admissions decisions for students who applied by the November 1 priority deadline.

MAY 2 >

Students should confirm their enrollment intentions to UF and pay the \$200 tuition deposit.

JULY 15 >

Last day for admitted students to send UF their final high school transcripts.

UF ADMISSIONS DECISIONS:

THE HOLISTIC APPROACH

At UF, we employ a comprehensive review process that evaluates academic and nonacademic criteria. When we review an application, we are considering a candidate's chance of success at UF based on what the student has accomplished within distinct opportunities and challenges. Our review is guided by these factors below.

The rigor of the academic record — the strength of the curriculum offered to the student and how the student has progressed over time

Academic performance as measured by grades and scores — high school grades and SAT or ACT



EXTRACURRICULAR
ACTIVITIES



The quality of thought in
the admission essay

Personal background and experiences: We search for students who show the potential and desire to succeed in a rigorous academic environment. After all, they will be UF's future community of learners, leaders and thinkers.

APPLYING TO UF

[Helpful information on the Common Application](#)

[Helpful information on the Coalition Application](#)



APPLICATION FEES

For either of these applications, there is a non-refundable \$30 application fee. Students who qualify for a fee waiver should indicate that when applying and work with their high school counselors to submit the necessary documentation through the Common Application or Coalition Application.

WRITING THE COLLEGE ESSAY

A good college essay is an important part of the application. The essay helps admissions officers learn more about you as a person beyond your GPA and test scores. The most important element of the college essay is that it showcases you, so pick the essay topic that is most comfortable to you.

STUDENT SELF-REPORTED ACADEMIC RECORD (SSAR)

Instead of requiring you to submit official transcripts with your UF application, the university requires you to self report your high school grades from 9th-11th and courses in progress for grade 12. The SSAR is required for all freshman applicants, including applicants who have already graduated from high school. Once you have submitted your application, a link will appear on your status page for you to create your SSAR. You must complete the SSAR and link it to your application for it to be complete.

More information on the SSAR submission is available on the admissions website.



MANY PATHWAYS TO ONE DESTINATION: UF

All freshman applicants are first considered for traditional Summer or Fall admission, but space in our on-campus programs is limited. If we are unable to offer admission to campus, students who have selected a major that falls within the PaCE or Partnership Programs will also be considered for admission through these pathways. UF also offers The Innovation Academy that operates on a spring/summer schedule. An explanation of these programs is on the next page.

COLLEGES & UNDERGRADUATE

MAJORS

COLLEGE OF AGRICULTURAL AND LIFE SCIENCES

cals.ufl.edu

Agricultural Education and Communication**

Agricultural Operations Management*

Animal Sciences**

Biology†

Botany*

Dietetics*

Entomology and Nematology**

Environmental Management in Agriculture and Natural Resources* (Interdisciplinary Studies)

Environmental Science*

Family, Youth and Community Sciences*

Food and Resource Economics*

Food Science*

Forest Resources and Conservation*

Geomatics

Horticultural Science*

Marine Sciences

Microbiology and Cell Science*

Natural Resource Conservation*

Nutritional Sciences*

Plant Science*

Soil and Water Sciences*

Wildlife Ecology and Conservation*

COLLEGE OF THE ARTS

arts.ufl.edu

Art**

Art History*

Dance*

Digital Arts and Sciences

Graphic Design*

Music*

Music Education*

Theatre, General*

Theatre Performance

Theatre Production

WARRINGTON COLLEGE OF BUSINESS

warrington.ufl.edu

FISHER SCHOOL OF ACCOUNTING

warrington.ufl.edu/fsoa

Accounting

HEAVENER SCHOOL OF BUSINESS

warrington.ufl.edu.sb

Business Administration, General Studies**

Finance†

Information Systems†

Management†

Marketing†

COLLEGE OF DESIGN, CONSTRUCTION AND PLANNING

dcp.ufl.edu

Architecture

Interior Design

Landscape Architecture

Sustainability and the Built Environment**

M.E. RINKER, SR. SCHOOL OF CONSTRUCTION MANAGEMENT

dcp.ufl.edu/rinker

Construction Management

COLLEGE OF EDUCATION

education.ufl.edu

Education, Early Childhood

Education, Elementary

Education Sciences **

HERBERT WERTHEIM COLLEGE OF ENGINEERING

eng.ufl.edu

Aerospace Engineering

Biological Engineering

Biomedical Engineering

Chemical Engineering

Civil Engineering

Computer Engineering

Computer Science†

Digital Arts and Sciences†

Electrical Engineering

Engineering (Exploring Engineering Studies)

Environmental Engineering

Industrial and Systems Engineering

Materials Science and Engineering

Mechanical Engineering

Nuclear and Radiological Sciences

Nuclear Engineering

COLLEGE OF HEALTH AND HUMAN PERFORMANCE

hhp.ufl.edu

Applied Physiology and Kinesiology

Health Education and Behavior*

Sport Management*

Tourism, Hospitality and Event Management*

COLLEGE OF JOURNALISM AND COMMUNICATIONS

jou.ufl.edu

Advertising**

Journalism**

Public Relations**

Media Production, Management and Technology **

120+ MAJORS 100+ MINORS

*PaCE Majors
†Innovation Academy Majors

COLLEGE OF LIBERAL ARTS AND SCIENCES

clas.ufl.edu

Arabic
African-American Studies*†
African Languages
Anthropology*†
Astronomy and Astrophysics
Biology†
Botany
Chemistry†
Chinese
Classical Studies
Computer Science*
Criminology
Data Science
Dual Languages
Economics
English*†
Foreign Languages and Literatures
French and Francophone Studies
Geography*†
Geology*
German
Hebrew
Hispanic and Latin American
Languages, Literature & Linguistics
History*†
International Studies
Italian
Japanese
Jewish Studies
Linguistics*
Marine Sciences
Mathematics*†
Microbiology and Cell Science
Philosophy*
Physics
Political Science†
Portuguese
Psychology†

Religion*
Russian
Sociology*†
Spanish*
Statistics*
Sustainability Studies*
Women's Studies*
Zoology
Interdisciplinary Studies Majors
American Indian and
Indigenous Studies
Biochemistry and Molecular Biology
Biological Illustration
Film and Media Studies
Latin American Studies
Medieval and Early Modern Studies
Neurobiological Sciences

COLLEGE OF NURSING

nursing.ufl.edu

Nursing

COLLEGE OF PHARMACY

cop.ufl.edu

Pharmacy (Pre-professional)

COLLEGE OF PUBLIC HEALTH AND HEALTH PROFESSIONS

phhp.ufl.edu

Communication Sciences and Disorders
Health Science
Public Health

This information is accurate as of
July 2021. Majors are subject to change.

The Innovation Academy

UF's Innovation Academy (IA) prepares students to thrive in an innovative culture. This distinctive program brings together students from 29 majors, leading to a convergence of original ideas centered on innovation, creativity, entrepreneurship, ethics and leadership.

innovationacademy.ufl.edu

The PaCE Program

PaCE offers a blended learning model in which freshmen start their degree through our top-ranked UF Online program and then transition to campus to complete their undergraduate degree. Applicants are reviewed for admission to PaCE by selected major, and only applicants who select one of the 60 eligible majors will be considered for the program. Students admitted to PaCE will complete a minimum of 15 credit hours and two semesters through UF Online. PaCE students can transition to campus after completing a total of 60 credit hours and all prerequisite courses for their major.

admissions.ufl.edu/learn/pace

Partnership Programs

UF maintains partnerships with Santa Fe College and the State College of Florida to offer guaranteed transfer pathways to students within select majors. Students will be considered for admission based on academic qualifications and intended major.

Gator Engineering at Santa Fe

Gainesville, FL

eng.ufl.edu/students/gesf/

Gator Engineering at State College of Florida

Manatee-Sarasota, FL

eng.ufl.edu/students/gescf/

Gator Design and Construction at Santa Fe

Gainesville, FL

dcp.ufl.edu/gdc/



EXPERIENCE OUR CAMPUS LIFE.

We offer a range of visit and engagement opportunities to help you learn more about UF. Join us on campus for an information session with our admissions officers followed by a guided tour led by one of our current students. Can't make it to campus? Sign up for one of our weekly virtual information sessions and download our self-guided tour through the GatorWay app to check out the UF campus from anywhere in the world.

**VIEW CURRENT CAMPUS
VISIT OPPORTUNITIES:**
admissions.ufl.edu/visit



admissions.ufl.edu
352-392-1365